

# Case 2

## Module 3: Real World Application of Mechanical Circulatory Support

Divaka Perera MA, MD, FRCP  
St. Thomas' Hospital  
King's College  
London, UK

## Disclosure

All presenters have a speaker agreement with Maquet

## Disclaimer – Indications

The content of this presentation represents a medical practitioner's authorized practice of medicine in the exercise of appropriate medical judgment for the best interest of the patient.

Refer to Maquet's Instructions for Use for current indications, warnings, contraindications, and precautions.

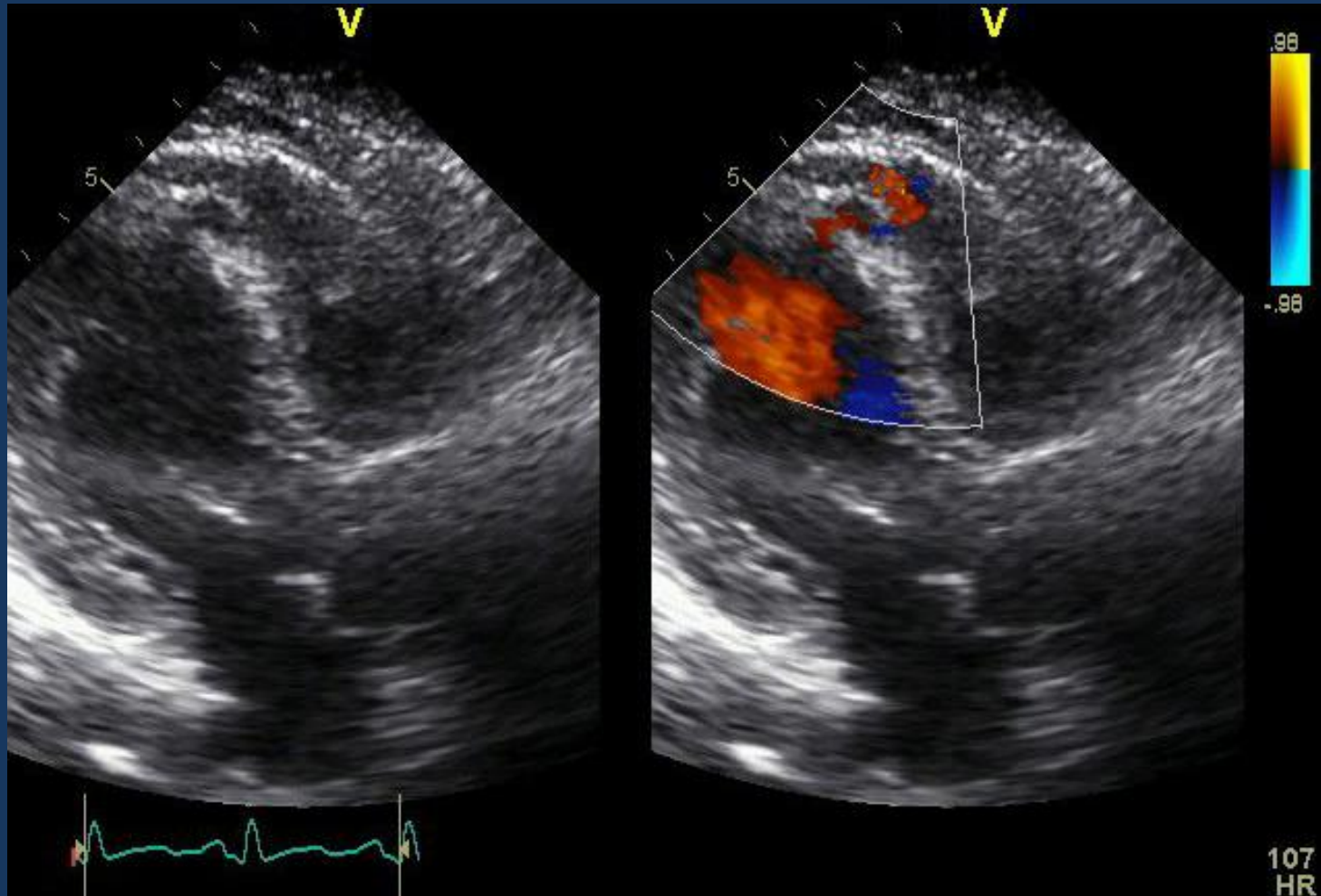
## Case 2: 55 yo female

**Treated hypertension, no prior cardiac history**  
**24 hours of “indigestion-like” chest pain**

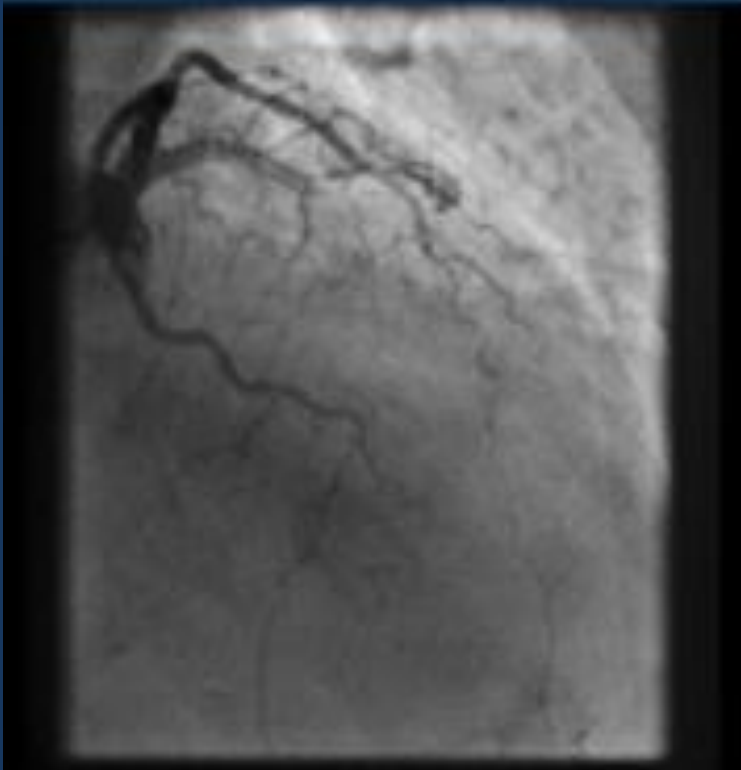
**ECG – ST elevation in anterolateral leads**

**Appeared unwell, clammy**  
**HR 105 bpm, Systolic BP 90mmHg**  
**SaO<sub>2</sub> on room air 93%, basal lung crepitations**

# Case 2: Echocardiogram



# Case 2: Diagnostic Angiogram



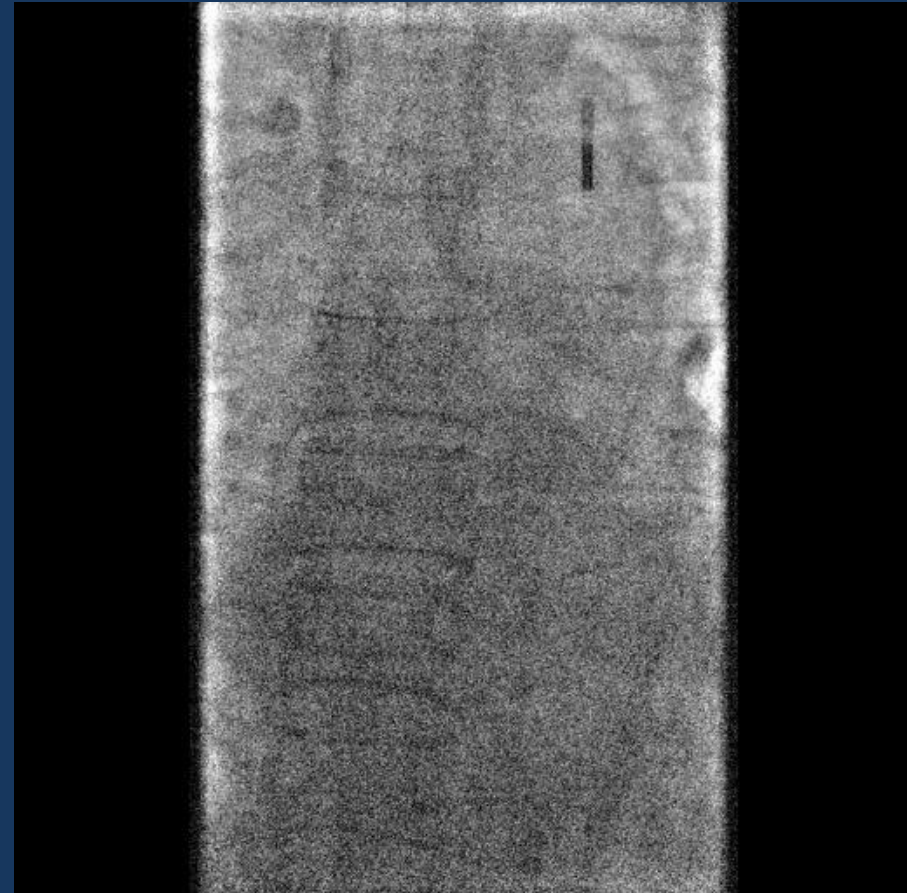
## Case 2: 55 yo female

**Reviewed by cardiothoracic  
surgeons:**

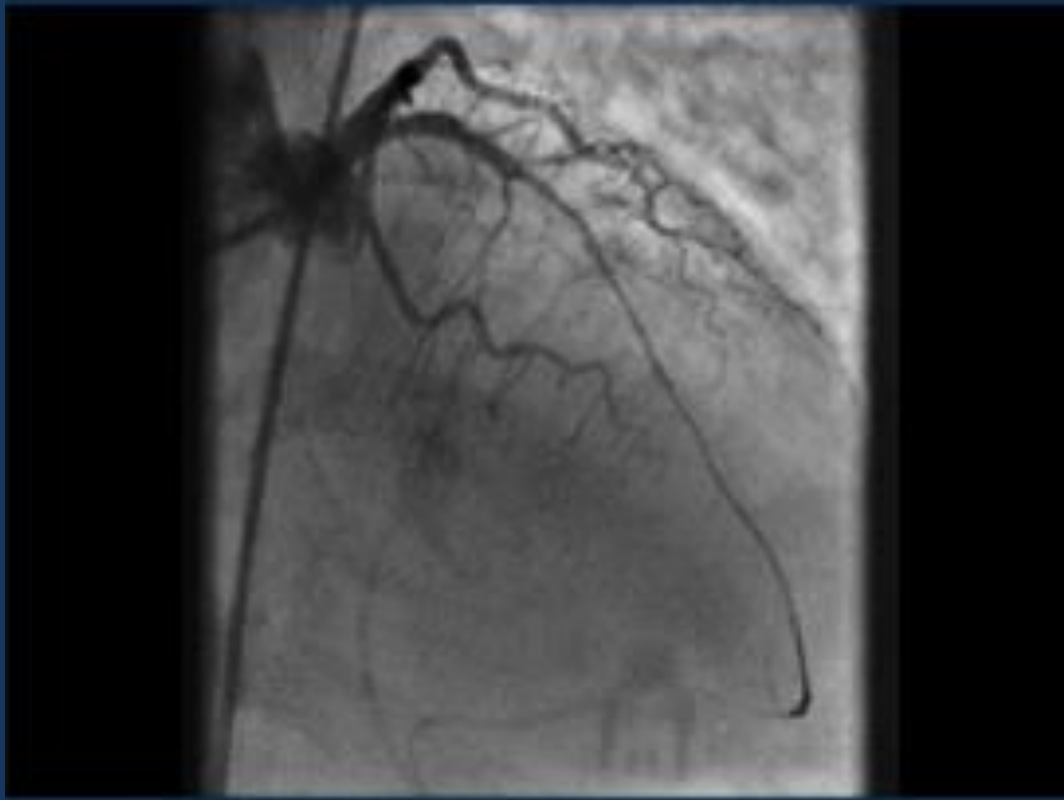
*High risk for acute CABG and  
VSD repair*

*Support hemodynamically*

**IABP Inserted**



# Case 2: After Thrombus Aspiration



# Case 2: 55 yo female

**Day 1:**

**No inotropic support required  
Surgeons request several days of IABP**

**Day 6:**

**Stable on IABP, no inotropes  
Attempt at weaning caused pulmonary edema**

**Day 8:**

**Surgery for VSD Repair**